

# P R B X

POWERBOX Industrial Line  
PHB75W Series  
49.5-75W 4:1 Single Output  
DC/DC Converter

## Features

49.5W/75W isolated output  
Efficiency to 85%  
300KHz switching frequency  
4:1 input range  
Regulated outputs  
Continuous short circuit protection  
Five-sided metal case  
Half-brick size meet industrial standard

## Input

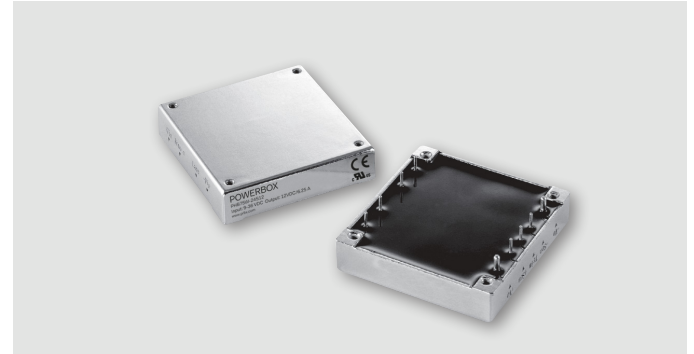
Voltage range	24V	9-36VDC
	48V	18-75VDC
Under voltage lockout	24V <sub>in</sub> power up	8.8V
	24V <sub>in</sub> power down	8V
	48V <sub>in</sub> power up	17V
	48V <sub>in</sub> power down	16V
Postive logic remote ON/OFF <sup>3,4</sup>		
Input filter	Pi type.	

## Output

Voltage accuracy	±1% max.	
Transient response	<500μ sec.	
External trim adj. range	±10%.	
Ripple and noise	3.3V & 5V: 40mV rms max, 100mV pk-pk max.	
20MHz BW	12V & 15V: 60mV rms max, 150mV pk-pk max.	
	24V: 100mV rms max, 240mV pk-pk max.	
	48V: 200mV rms, max, 480mV pk-pk, max.	
Temperature coefficient	±0.03%/°C max.	
Short circuit protection	Continuous.	
Line regulation <sup>1</sup>	±0.2% max.	
Load regulation <sup>2</sup>	±0.2% max.	
Overvoltage protection	115-140%, trip range, % Vo nom.	
Current limit	110-160% nominal output.	

## Environmental

Operating temperature	-40°C to +100°C.
Storage temperature	-55°C to +105°C.
Thermal shutdown	Case temperature 110°C typical.



## General

Efficiency	See table.
Isolation voltage	1500VDC min, input/output, input/case, output/case.
Isolation resistance	10 <sup>7</sup> ohms, min.
Switching frequency	300KHz typ.
Case material	Aluminum.
Dimensions	57.9 x 61.0 x 12.7 mm.
Weight	94g.

## Standards

Safety standards	UL60950-1 approval.
------------------	---------------------

## Note:

1. Measured from high line to low line.
2. Measured from full load to zero load.
3. Logic compatibility: Open collector ref to -Vin. Module ON Open circuit. Module OFF <0.8VDC.
4. Suffix "N" to the model number with negative logic remote ON/OFF. Module ON <0.8VDC. Module OFF >Open circuit.

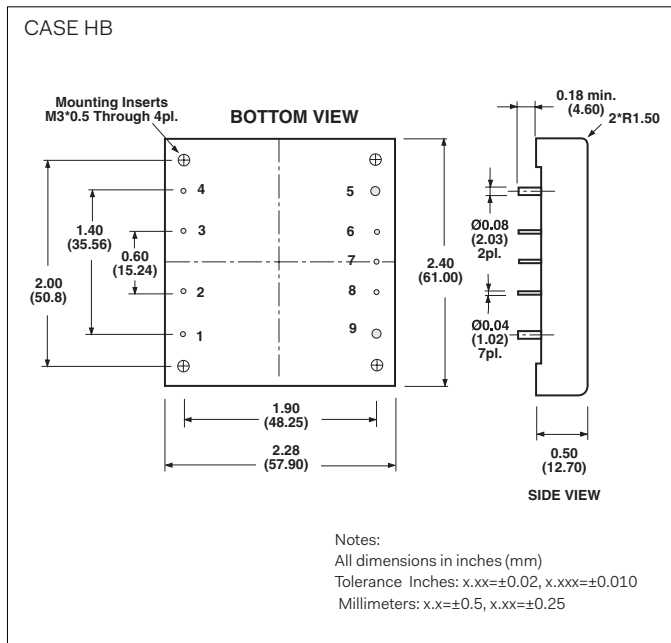
POWERBOX Industrial Line  
 PHB75W Series  
 49.5-75W 4:1 Single Output  
 DC/DC Converter

Model Number	Input Voltage	Output Voltage	Output Current		Input Current		Efficiency	Capacitor Load Max
			Min	Max	No Load	Full Load		
PHB75W-24S33	9-36 VDC	3.3 VDC	0 mA	15 A	50 mA	2611 mA	79%	15000uF
PHB75W-24S05	9-36 VDC	5 VDC	0 mA	15 A	50 mA	3811 mA	82%	15000uF
PHB75W-24S12	9-36 VDC	12 VDC	0 mA	6.25 A	50 mA	3765 mA	83%	6250uF
PHB75W-24S15	9-36 VDC	15 VDC	0 mA	5 A	50 mA	3720 mA	84%	5000uF
PHB75W-24S24	9-36 VDC	24 VDC	0 mA	3.12 A	50 mA	3720 mA	84%	3120uF
PHB75W-24S48	9-36 VDC	48 VDC	0 mA	1.56 A	50 mA	3811 mA	82%	1560uF
PHB75W-48S33	18-75 VDC	3.3 VDC	0 mA	15 A	50 mA	1289 mA	80%	15000uF
PHB75W-48S05	18-75 VDC	5 VDC	0 mA	15 A	50 mA	1883 mA	83%	15000uF
PHB75W-48S12	18-75 VDC	12 VDC	0 mA	6.25 A	50 mA	1860 mA	84%	6250uF
PHB75W-48S15	18-75 VDC	15 VDC	0 mA	5 A	50 mA	1838 mA	85%	5000uF
PHB75W-48S24	18-75 VDC	24 VDC	0 mA	3.12 A	50 mA	1835 mA	85%	3120uF
PHB75W-48S48	18-75 VDC	48 VDC	0 mA	1.56 A	50 mA	1860 mA	84%	1560uF

**Note:**

1. Nominal input voltages 24 or 48 VDC.

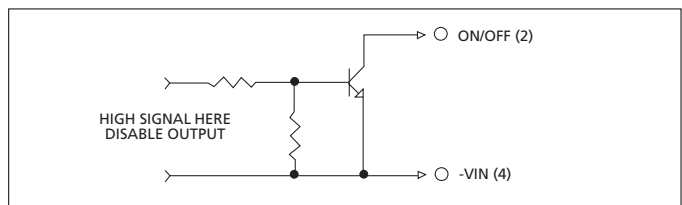
**Mechanical**



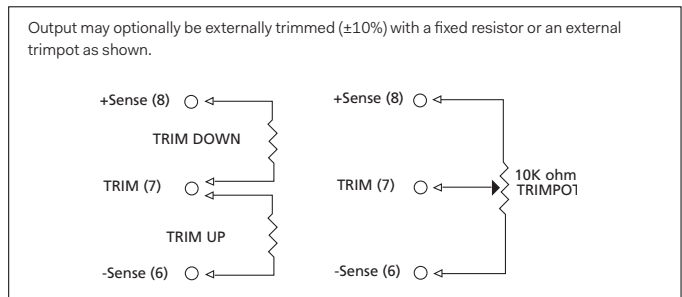
**Pin Connection**

Pin	Function
1	+V Input
2	ON/OFF
3	CASE
4	-V Input
5	-V Output
6	-Sense
7	Trim
8	+Sense
9	+V Output

**Remote On/Off Control**



**External Output Trimming**



Specifications are subject to change without notice.